

# Central Wyoming College Organizational Chart

**Board of Trustees**  
Gay Hughes  
Paula Hunker  
Ernie Over  
Nichole Shoening  
Shana Tarter  
Craig Tolman  
Carlton Underwood

Board of Trustees

Brad Tyndall  
President

Paula Hartbank  
Executive Assistant to the President  
and Board of Trustees

Beth Monteiro  
Executive Director, CWC Foundation

Kathy Wells  
Vice President of Academic Affairs

Willie Noseep  
Vice President of Administrative  
Services

Cory Daly  
Vice President of Student Affairs

Jennifer Marshall-Weydevel  
Executive Director of Marketing and  
Public Relations

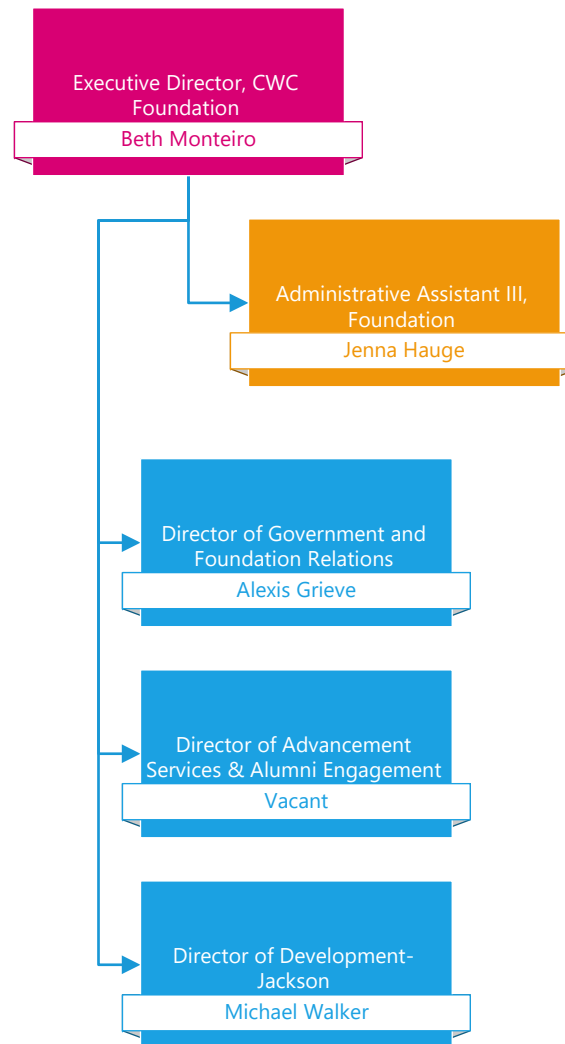
Catherine Trough  
Executive Director of Institutional  
Effectiveness and Research

Joanna Kail  
Chief Executive Officer  
Wyoming PBS

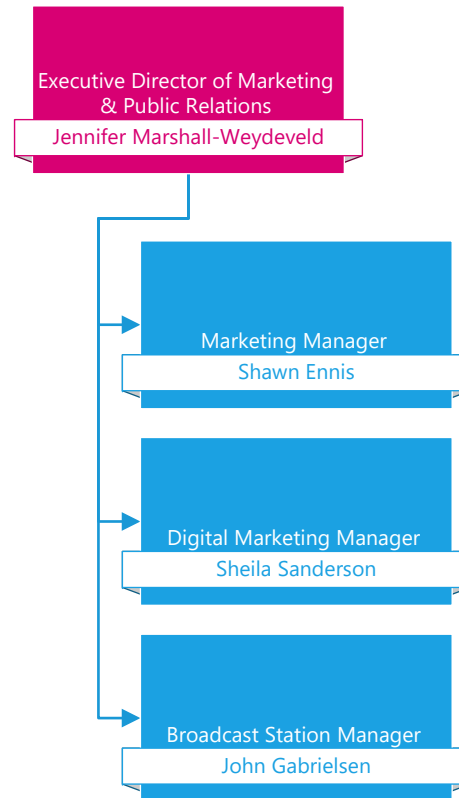
John Wood  
Chief Information Officer

Kimberly Applegate  
Institutional Researcher-NASNTI

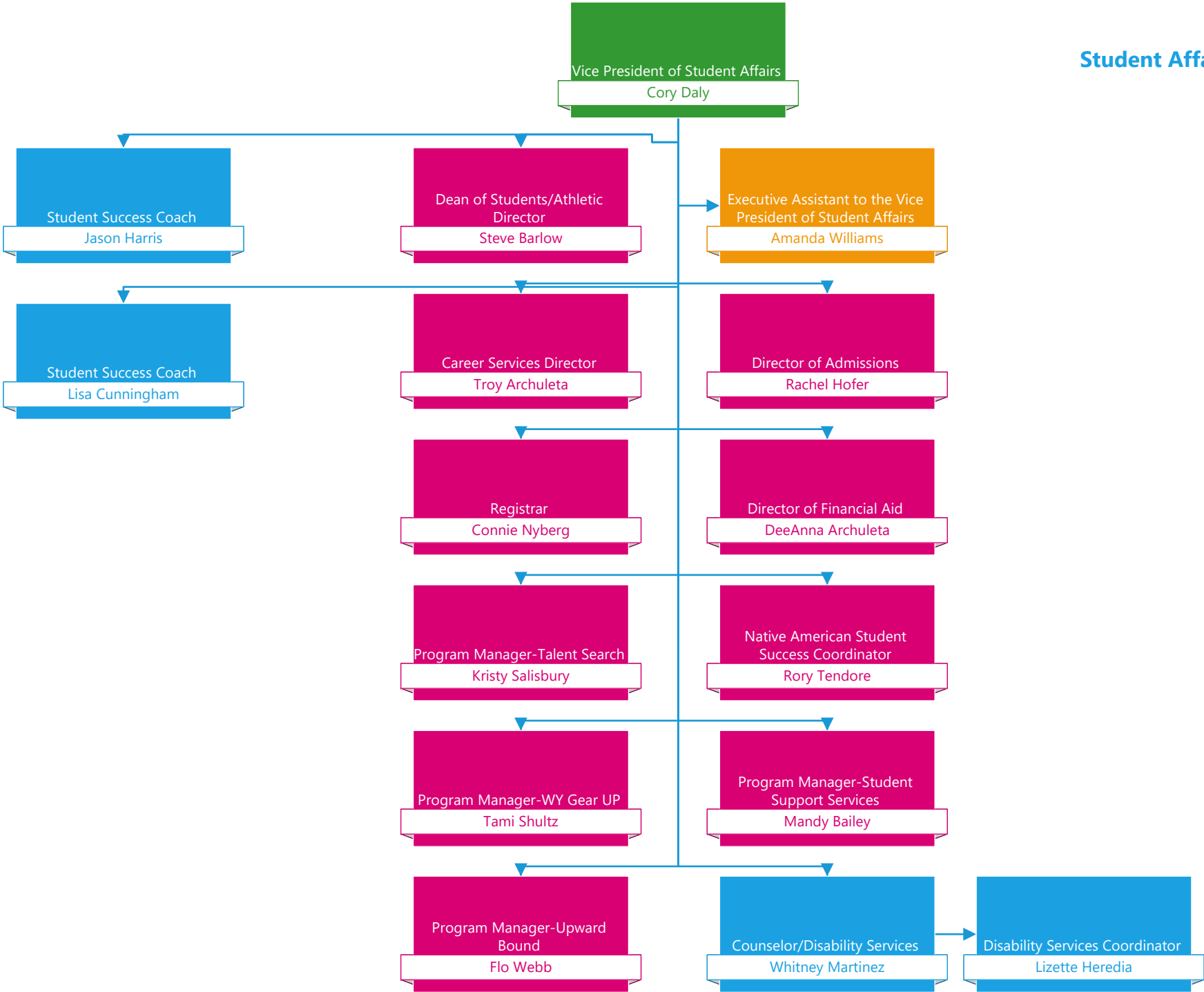
Susan Yun  
Institutional Researcher

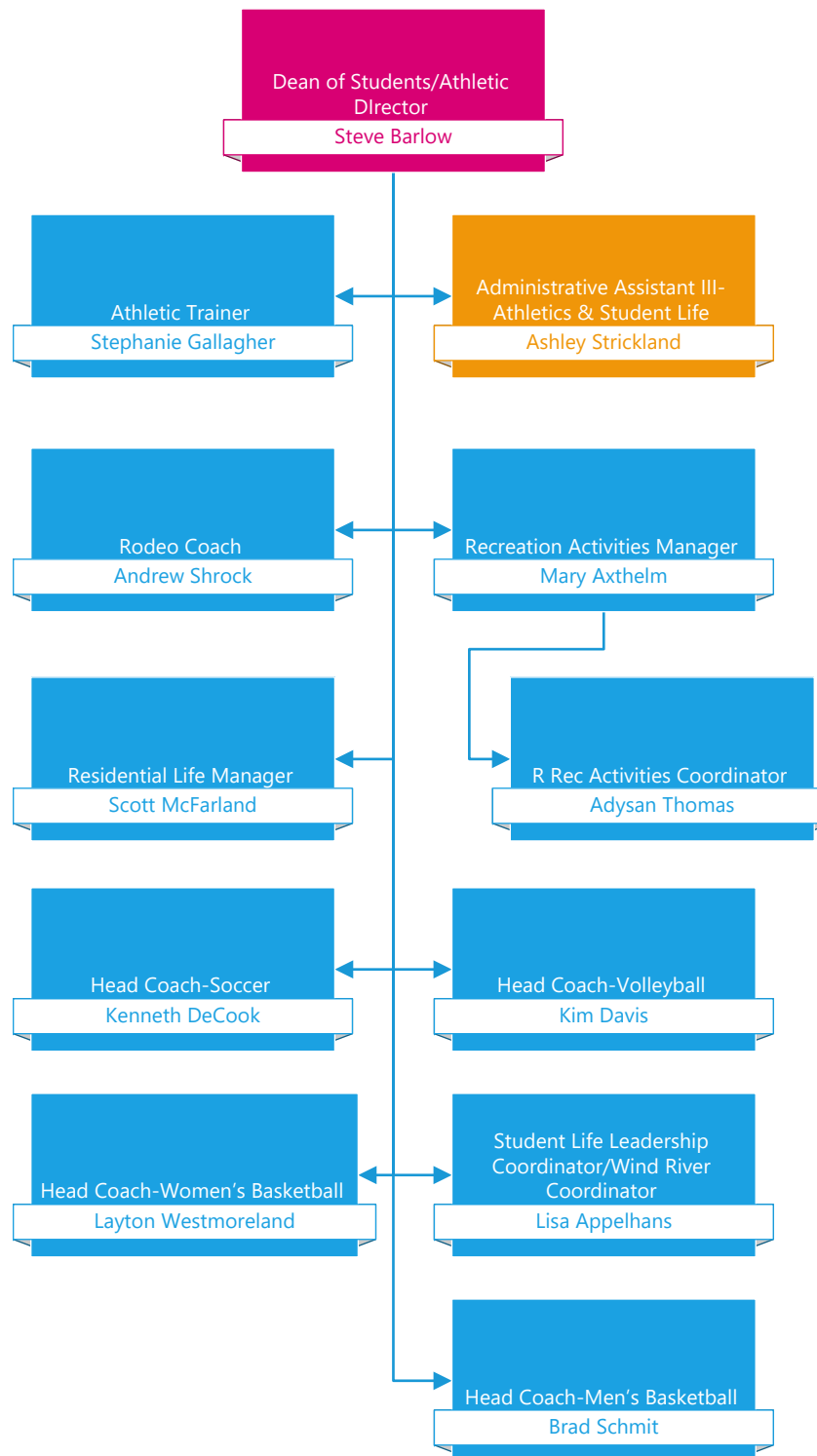


## Marketing & Public Relations



Student Affairs





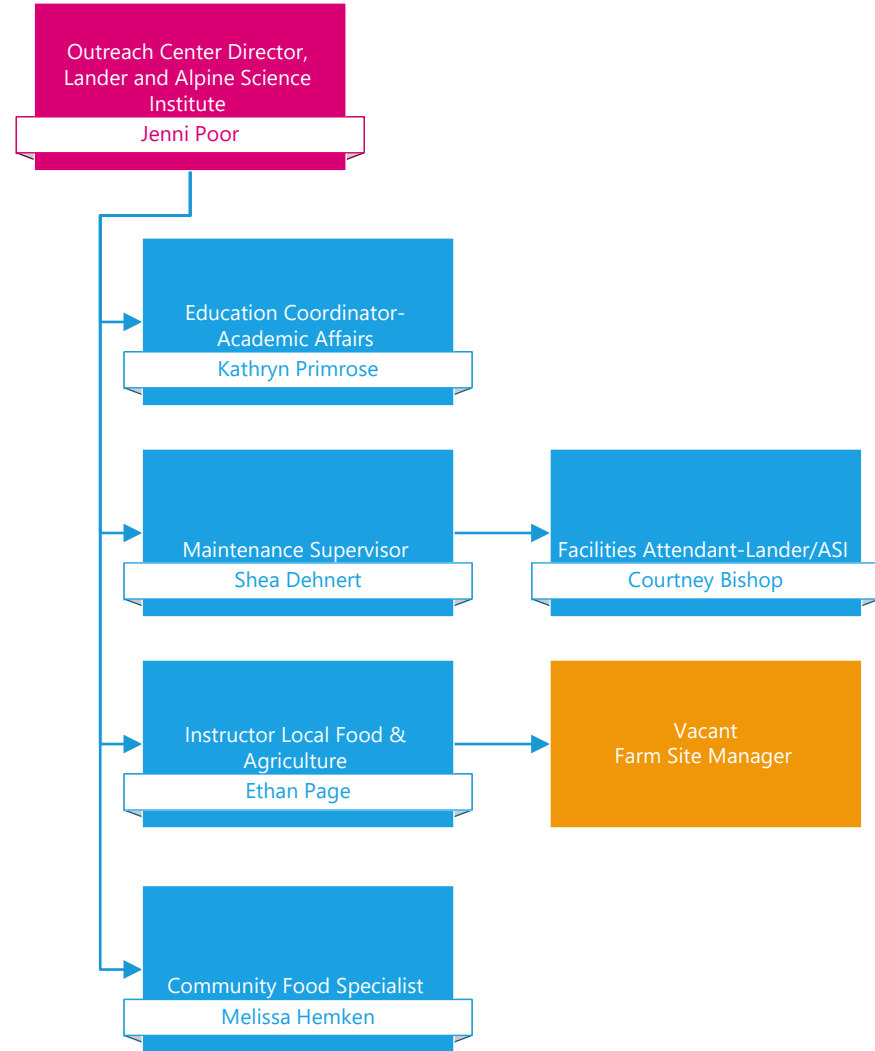
## Student Affairs, Continued

- Athletics
- Residential Life
- Outreach-Dubois
- Student Life Leadership
- Community Education

## Dubois Outreach Center

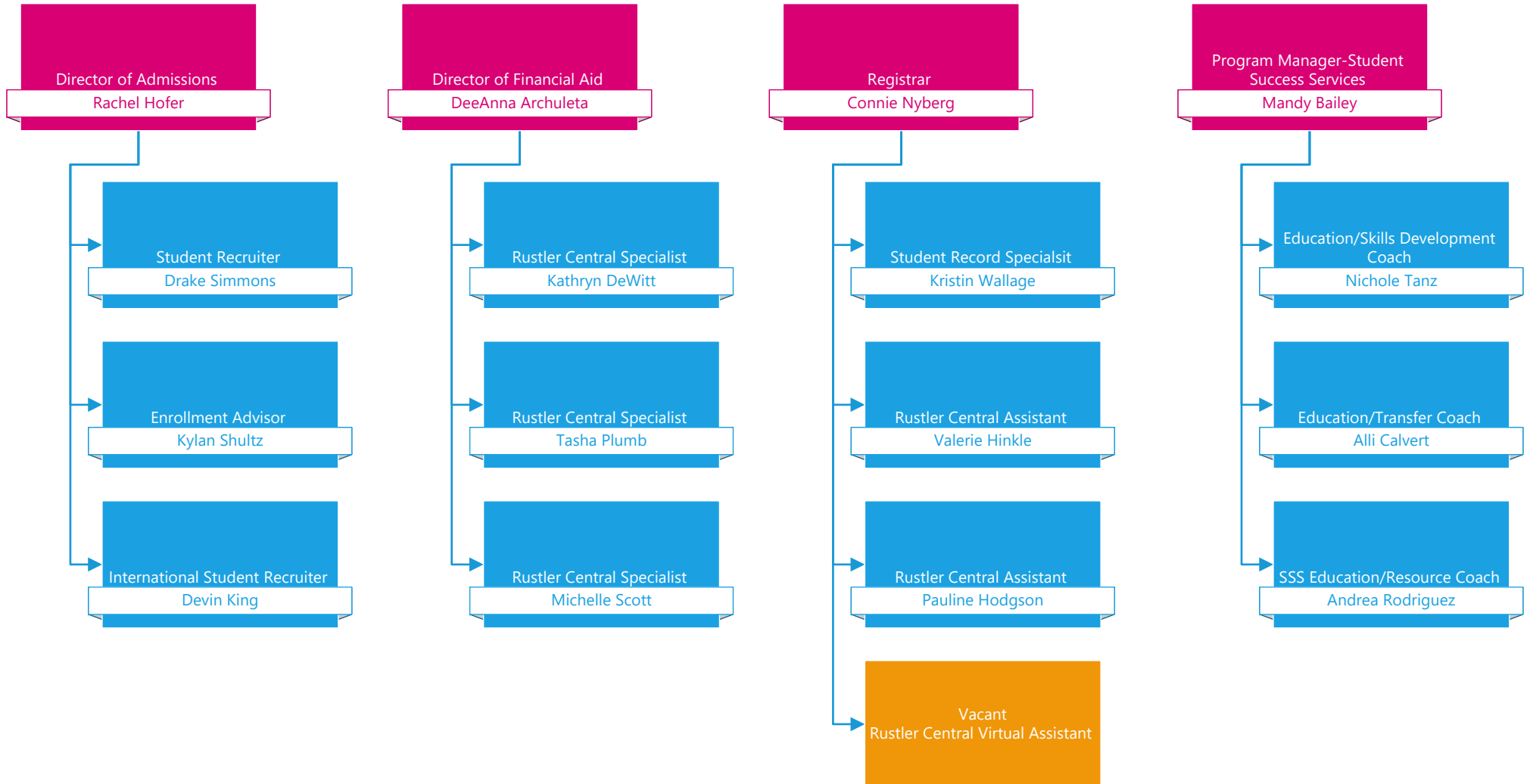


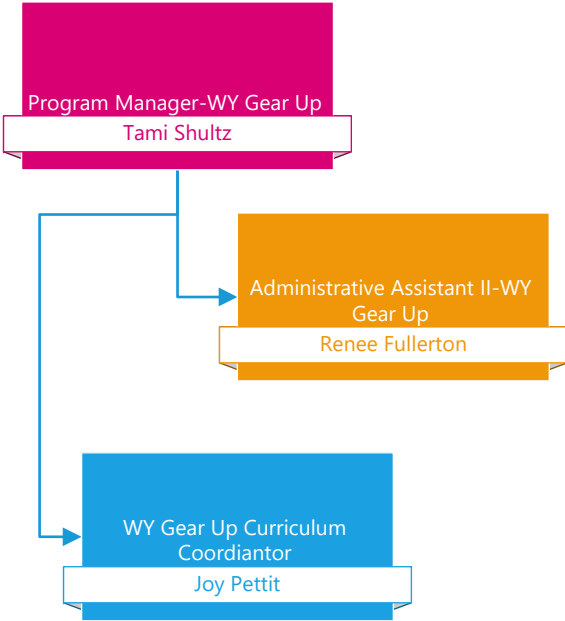
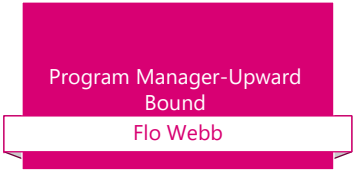
## Lander and Alpine Science Institute



## Student Affairs, Continued

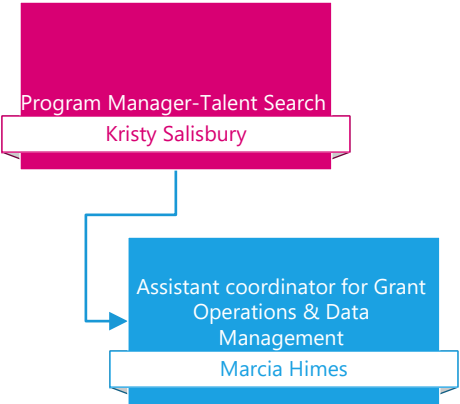
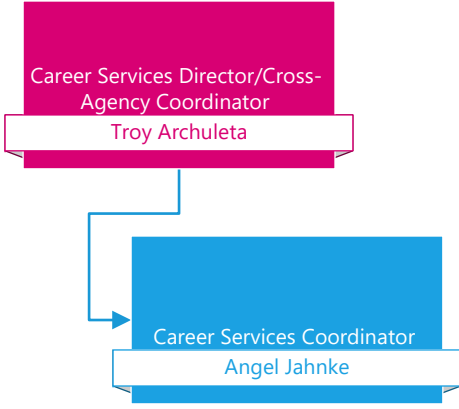
- Admissions
- Financial Aid
- Registrar
- Student Success Services





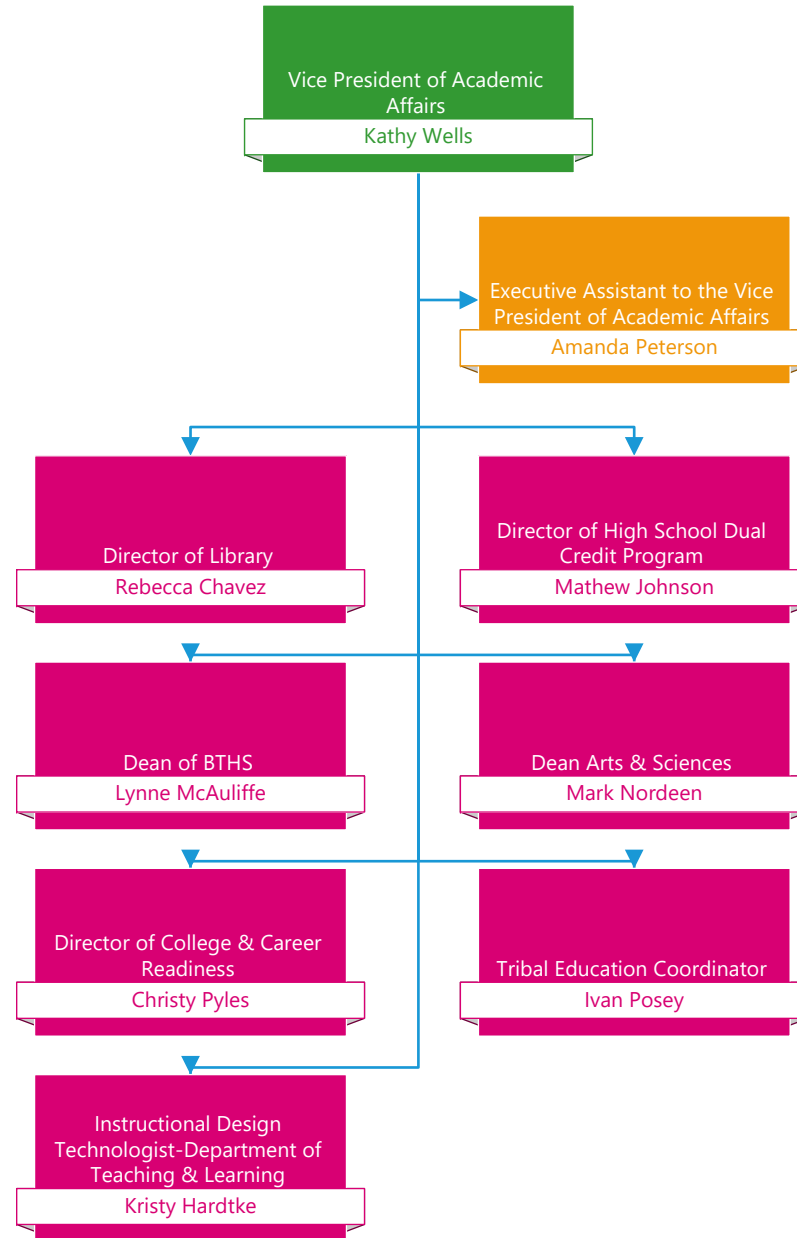
**Student Affairs, Continued**

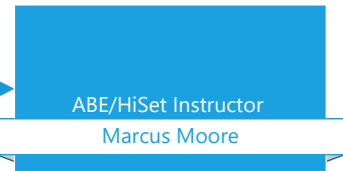
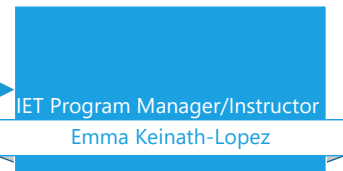
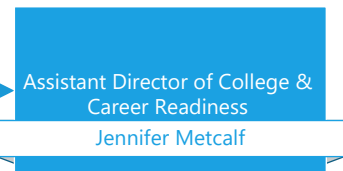
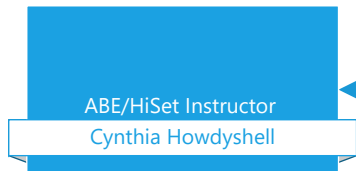
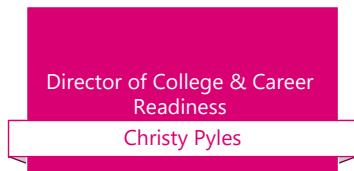
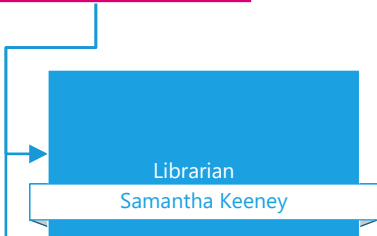
- Upward Bound
- WY Gear Up
- Talent Search
- Career Services





## Academic Affairs



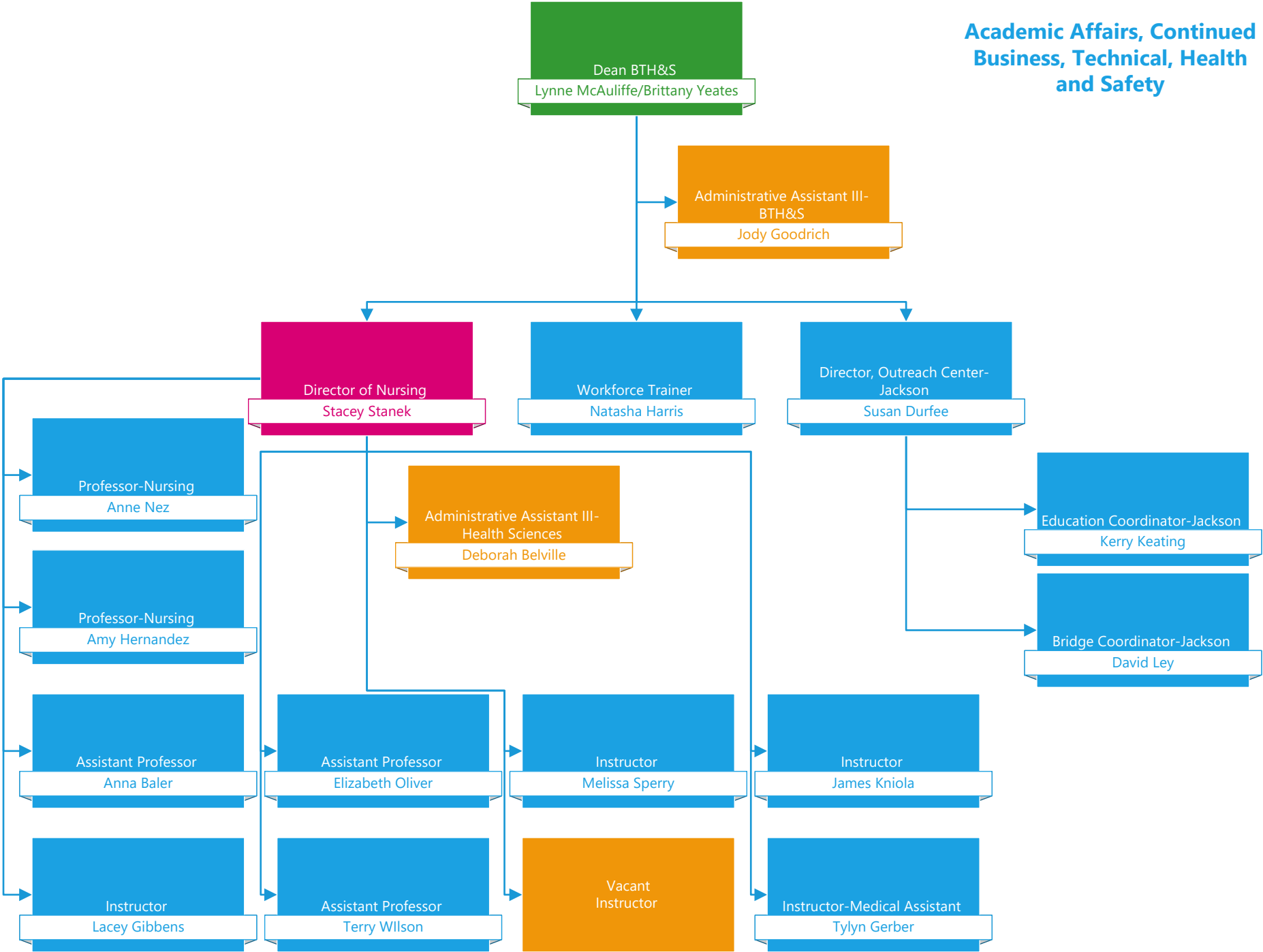


### Academic Affairs, Continued

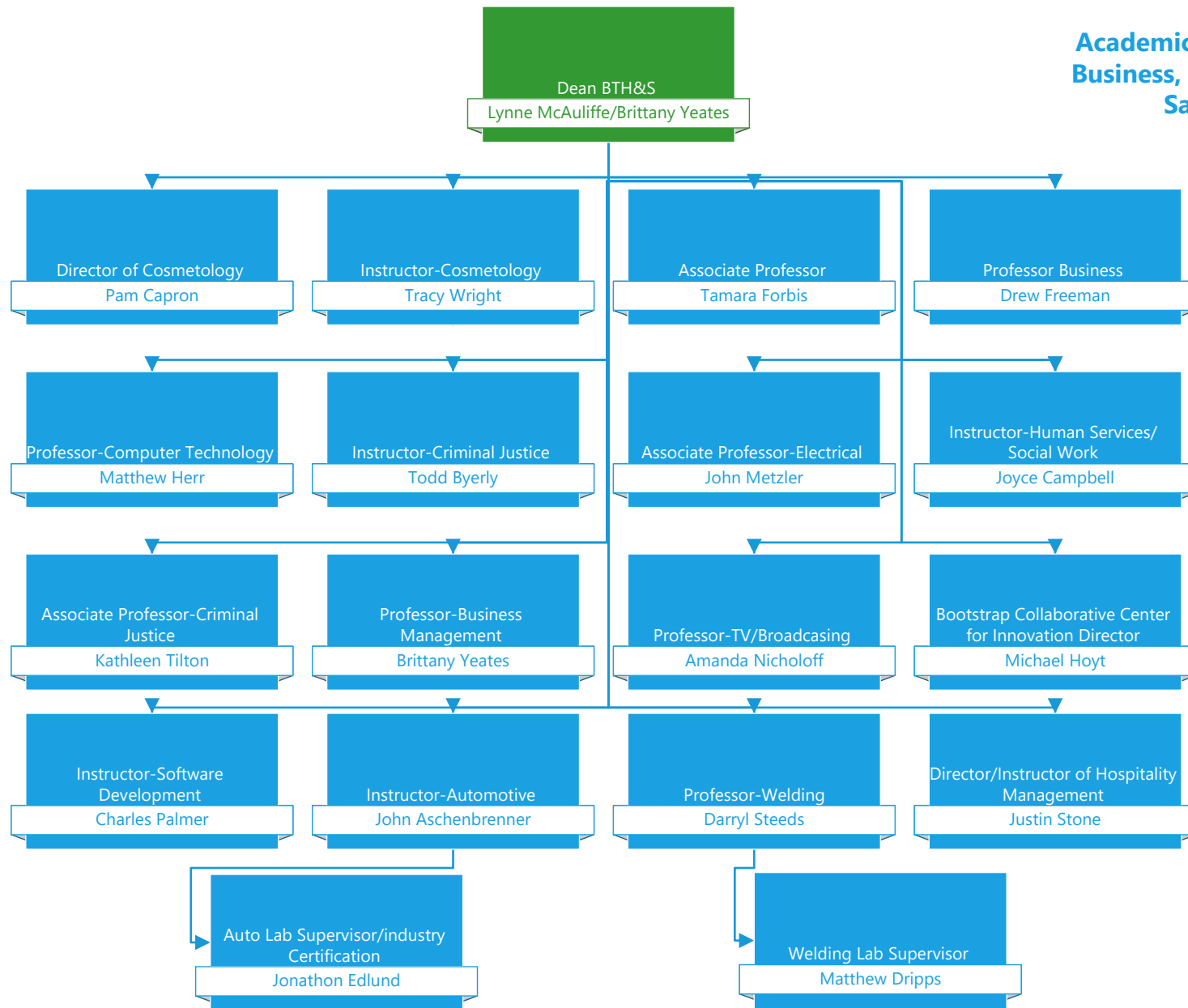
- Library
- High School Dual Credit Program
- College & Career Readiness
- Teaching & Learning



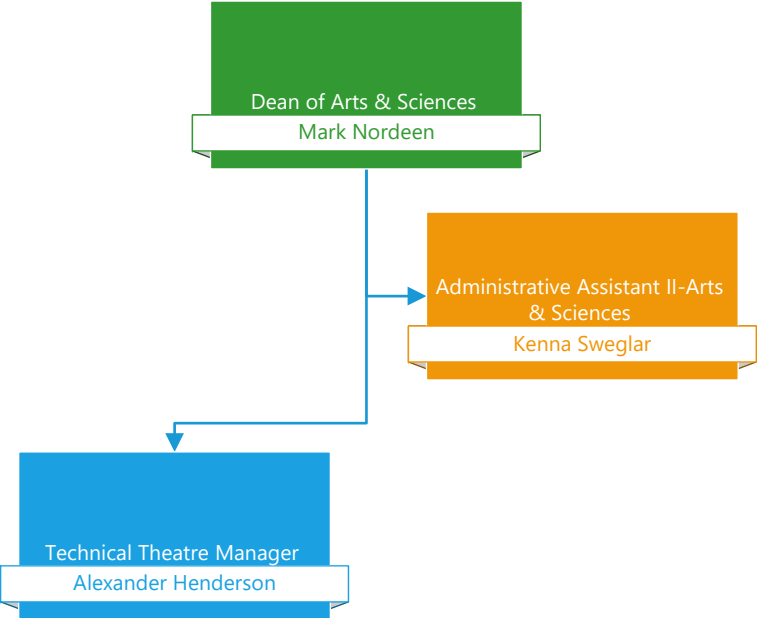
**Academic Affairs, Continued  
Business, Technical, Health  
and Safety**



# Academic Affairs, Continued Business, Technical, Health & Safety Faculty

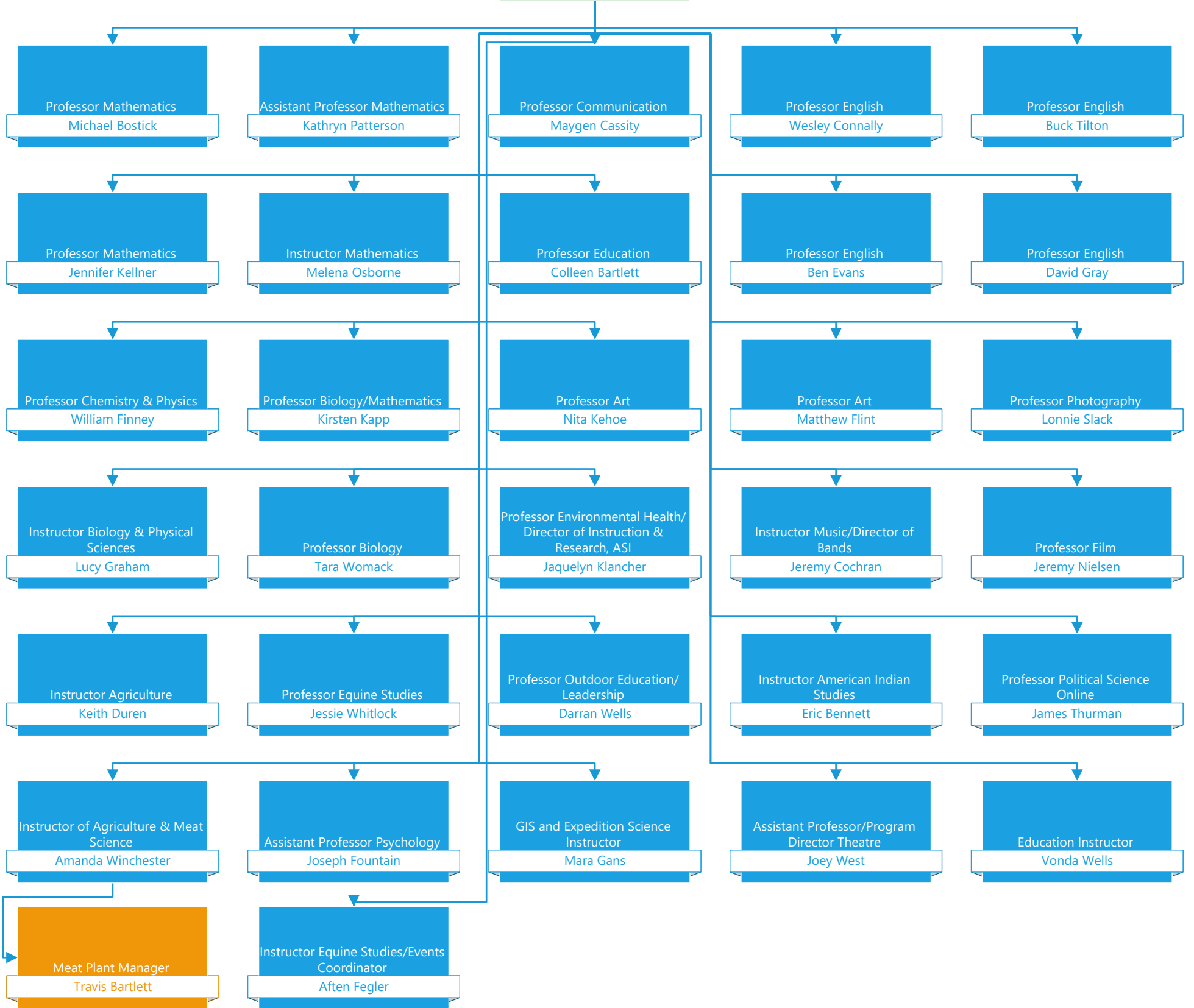


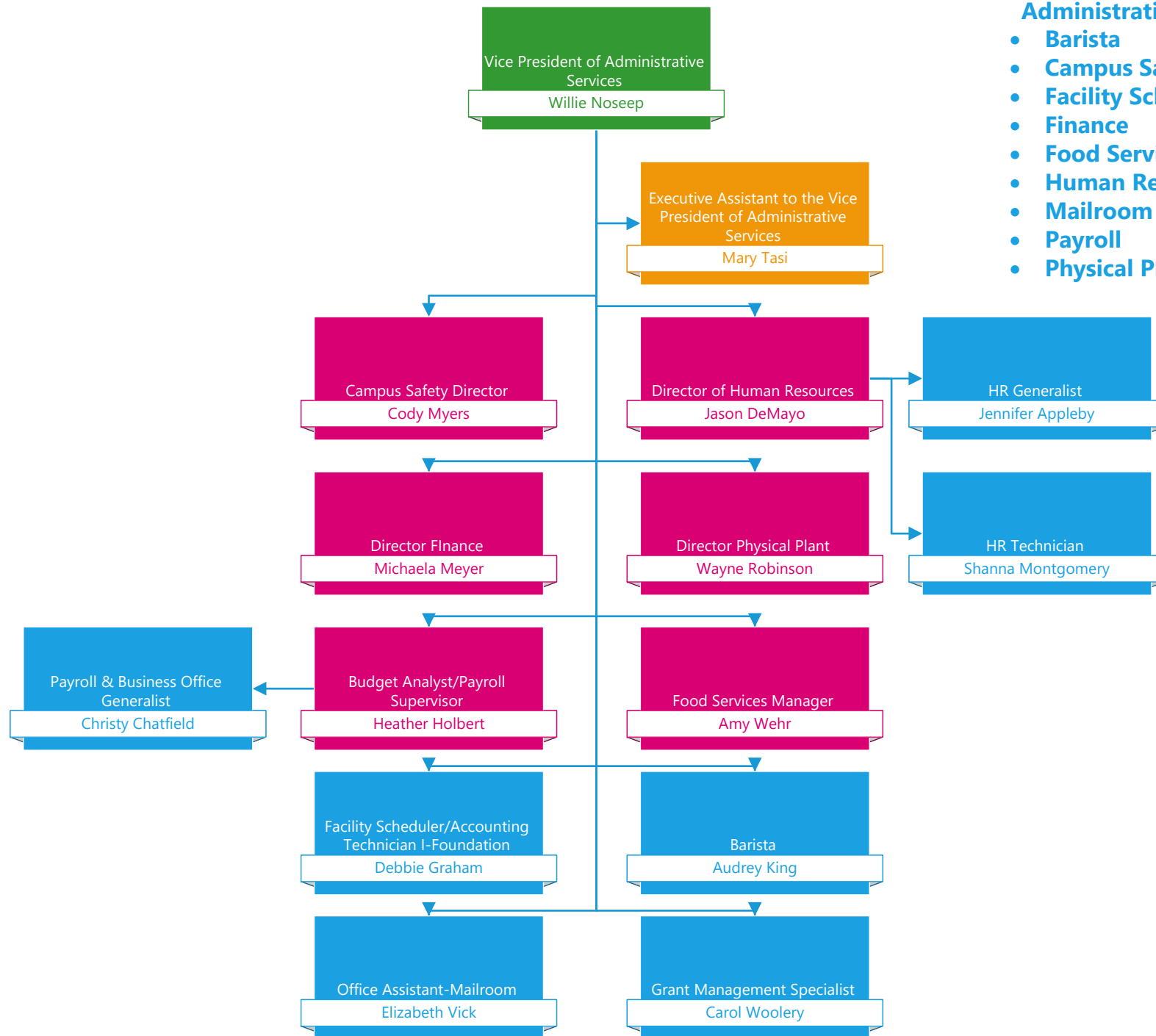
**Academic Affairs, Continued  
Arts & Sciences**



**Academic Affairs, Continued  
Arts & Sciences-Faculty**

Dean of Arts & Sciences  
Mark Nordeen

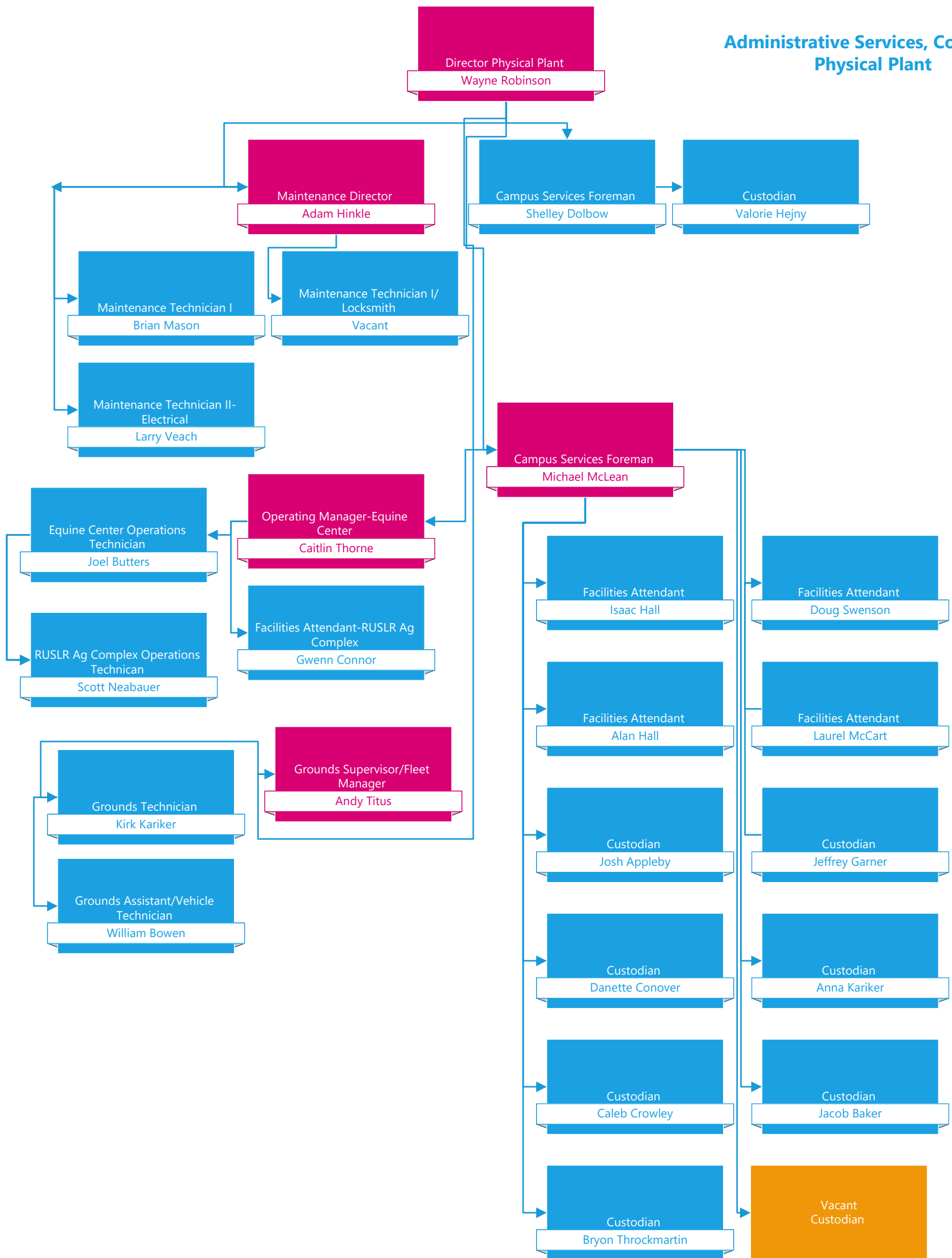




## Administrative Services

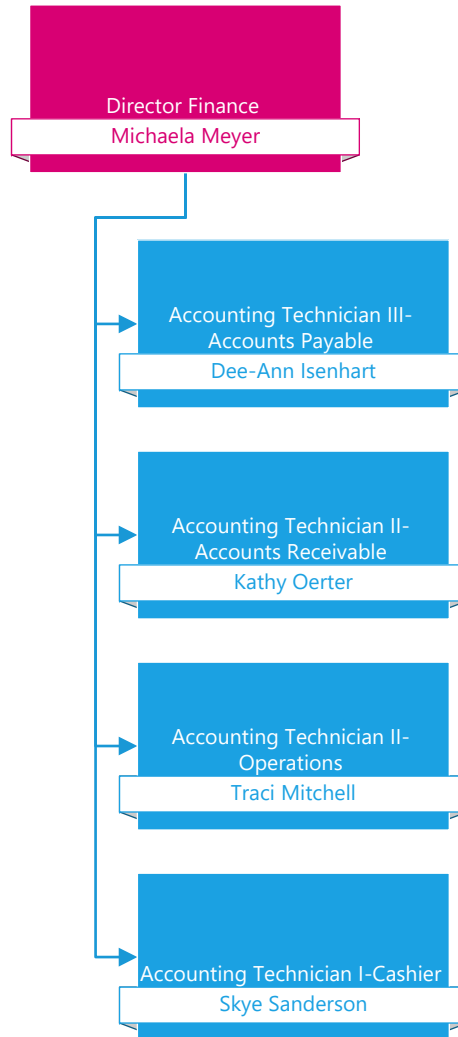
- **Barista**
- **Campus Safety**
- **Facility Scheduling**
- **Finance**
- **Food Services**
- **Human Resources**
- **Mailroom**
- **Payroll**
- **Physical Plant**

**Administrative Services, Continued  
Physical Plant**



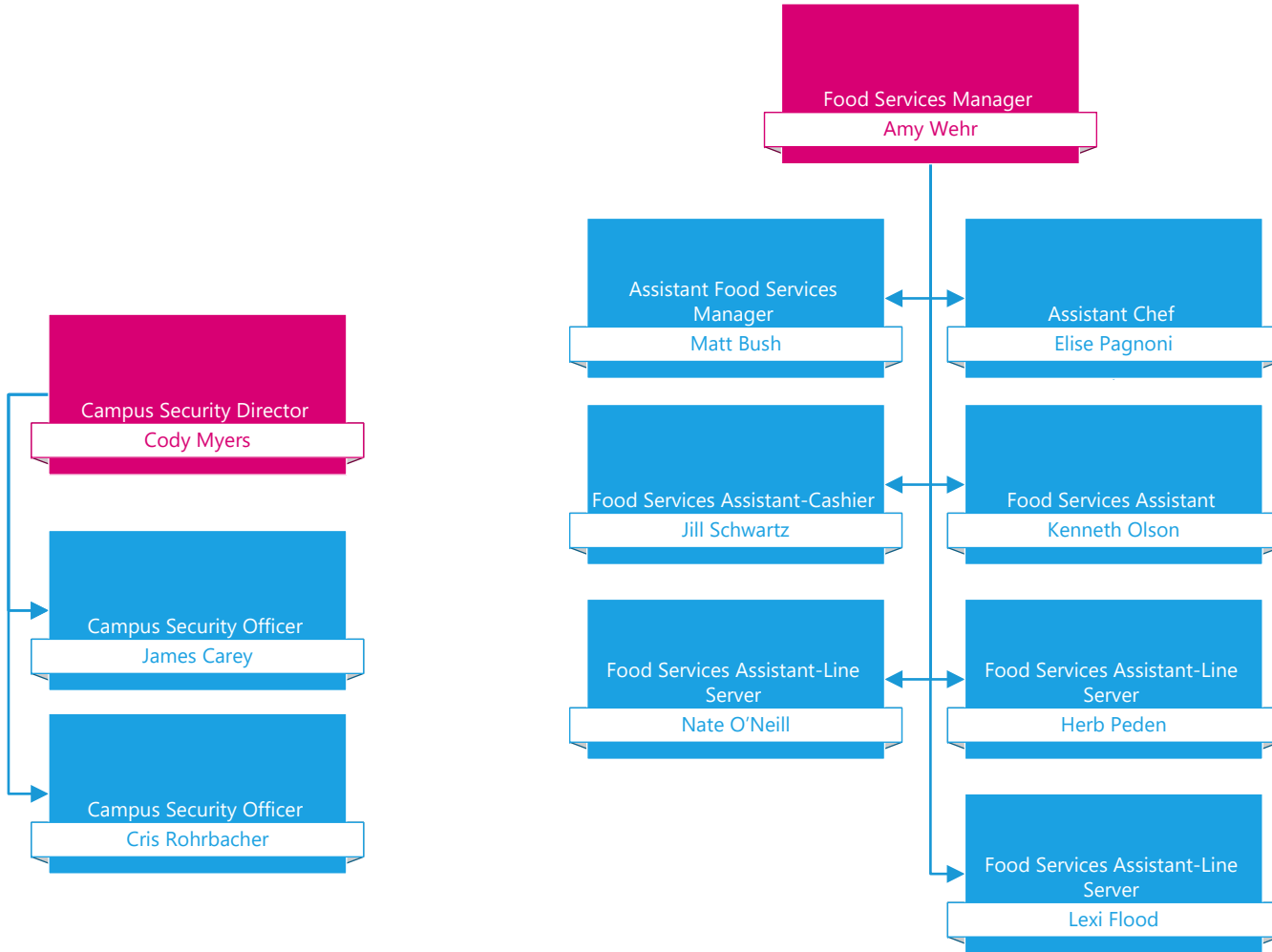


## Administrative Services, Continued Finance

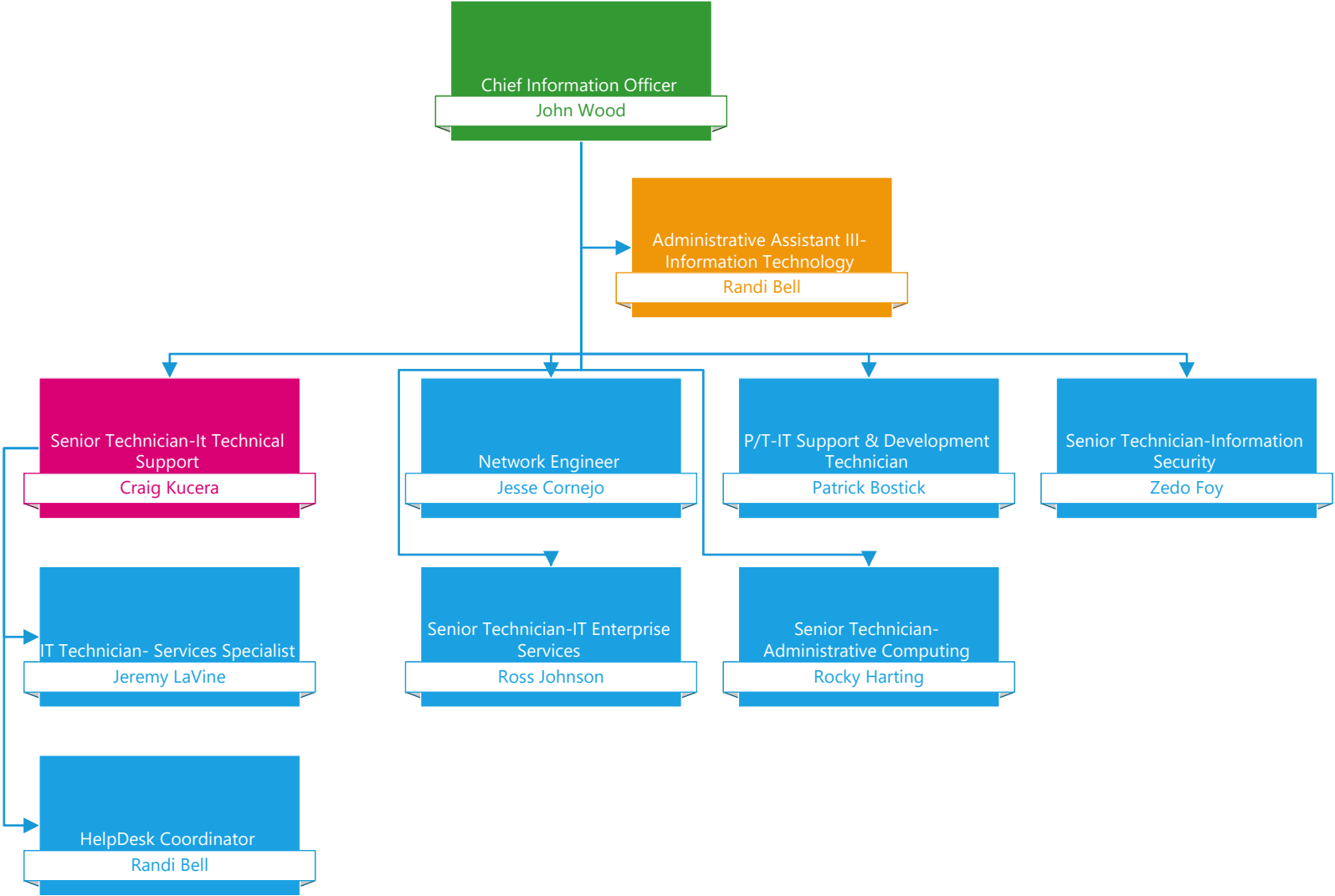


## Administrative Services, Continued

- Campus Safety
- Food Service



Information Technology



# Wyoming Public Broadcasting

